

# HOMEPPLACE

## NEWSLETTER

Winter 2022

At HomePlace, we are passionate about building each participant's confidence and independence in living their lives in ways that they enjoy and have meaning for them. Everyday, our staff see the talents of the participants we support. This was highlighted in our first 'HomePlace has got Talent' show on 19th August 2022. Nineteen participants had video or power-point entries. Creative brilliance shone through – not only from the participants, but also from their support staff in being videographers, actors, power-point developers, all to showcase the talents of the people whom HomePlace exists for.

Judges Glenn Stanton (Executive Manager of Participant and Quality) and participants Gavin Haese and Jane McNamara had the difficult task of selecting the winners for seven categories. Snapshots from all entries and the winners of each category are shown here. We look forward to shining a light on them again at our AGM on 21st October 2022.

HomePlace's Got  
**TALENT**



# HomePlace's Got **TALENT**

Everyone has their own talent!

**Winner of Most  
Talented Pet**



**Val**

Dancing Diamond  
A Talented Budgie

**Winner of Most  
Unique Talent**



**Milan**

Pioneer Pole Project

Entry in Most Talented Pet

**Jinny**

Incredible Fur Babies

Entry in Most Unique  
Talent

**Tarsh**

I'm a Barbie Girl

**Winner of Best Art/Drawing/Colouring**



**Bronwyn**

Cross Stitch

Entry in Best Art/Drawing/  
Colouring

**Mikhaila**

Colourful art piece

Entry in Best Art/Drawing/  
Colouring

**Megan**

Many Talents

Entry in Best Art/Drawing/  
Colouring

**Julie C**

Colouring

Entry in Best Art/Drawing/  
Colouring

**Roger**

Colouring

**Winner of Best Athletic  
Demonstration**



**David**

Boxing Champ

**Winner of Best Cooking  
Demonstration**



**Phillippa**

Cooking Show

Entry in Best Athletic  
Demonstration

**Craig**

Strike!

Entry in Best Athletic  
Demonstration

**Justine**

Martial Arts Demo

Entry in Best Cooking  
Demonstration

**Kobi and Jackie**

Pizza Night!



**Winner of Best Knitting  
or Craft**



**Kobi**

Knitting in Jammies

**Winner of Best  
Performing Artist**



**Carolyn**

Sister Act 3

Entry in Best Knitting or  
Craft

**Tricia**

Knitting Talents!

Entry in Best Performing  
Artist

**Georgia**

Singing 'By the Way!'

Entry in Best Performing  
Artist

**Jack**

Hip Hop

I have been enjoying catching up with participants over the winter months. I have been asking participants to provide feedback about the support they have from their HomePlace staff team. A selection of their responses are below.

## My HomePlace staff

"Are great"

"Get me to where I need to be"

"Are cool"

"Teach me things"

"Help me to make my home mine"

### From participants

Tarsh, Matthew C, Mel; Meryl, Peter, Craig, Mieke, David, Jack, Christina and Philippa.

Please see information on page 11 for how participants, family members and guardians can nominate staff for a HomePlace staff award. We want to recognise staff when they provide support in a way that makes a difference to the lives of participants, and we look forward to hearing how our staff have made a positive difference. We are aiming to present these awards at our AGM, and hope that participants and their family members can join us!

## Julie Bowman

Chief Executive



# Happy Birthday

Some memories of Peter's birthday celebration



More birthdays in 2022 over the winter months have included Pam, Nicky, John, Stephen, Paula, Val and Craig



# Save the date!

## HomePlace Annual General Meeting

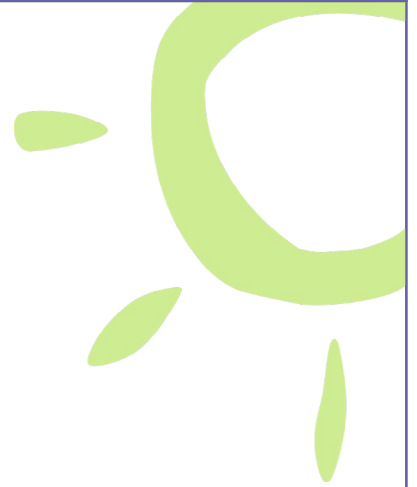
Come join us to hear participants, staff, and HomePlace's achievements at our 2022 Annual General Meeting.

21st October 2022  
5:30pm – 6:45pm

HomePlace,  
19-21 Belmore Terrace, Woodville, SA 5011

RSVP to Miriam Johnson, Relationship Partner by  
23rd September 2022  
[mjohnson@homeplace.com.au](mailto:mjohnson@homeplace.com.au)

(including showcase of participant talents and staff awards)



## HomePlace Christmas Party

2nd December 2022  
5:30pm – 7:30pm

Lakes Resort,  
West Lakes



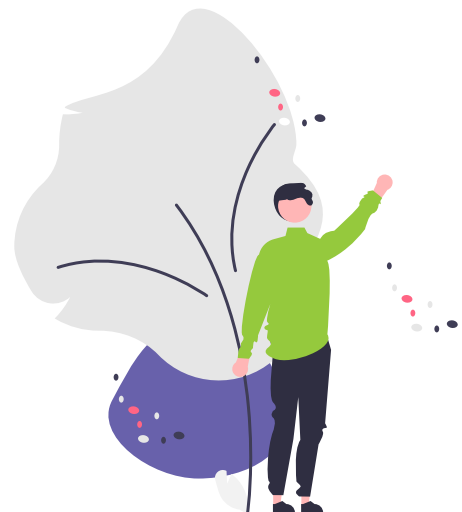
## We welcome new participants to HomePlace

Ralph, Georgia, Anne-Marie and Nikky

We are enjoying getting to know you and how best to provide the support you want to live your life in the way that matters to you.

## Welcome to new HomePlace staff

Chloe, Elizabeth, Kate, Kaitlyn, Maria and Nidhi.





# Helping us make HomePlace better

HomePlace's Peer Support group, facilitated by Our Voice SA, is providing fantastic feedback and suggestions for how we can make things better. Two examples include

- Improvements to HomePlace's Feedback and Complaints form for participants
- Designing our new Easy English version of our 'Welcome to HomePlace' booklets.

We thank Mr Peter and Mrs Debbie Woods, Craig Smith, Val Fraser and Jane McNamara for their time, energy and knowledge that they share every monthly meeting, expertly facilitated by Alison Vivian from Purple Orange.



Would you like to share your ideas with the group for how HomePlace can do things better, or any other issue that is affecting you or people with disability?

Please contact Alison Vivian, Project Officer at Our Voice SA on 83738321.

# Family Forum

On 24th August 2022, 26 people attended our first HomePlace Family Forum.

The evening covered four topics:

- A brief update on NDIA, and our tips for navigating the NDIS world.
- An introduction to “Individualised Living Options” and “Concierge” home and living models.
- Two parents spoke about their successful pathway of securing a home for their family member living with disability.
- A presentation by New Dawn Housing, a specialist disability accommodation provider, showing their house designs and locations of housing developments.



The evening provided an opportunity for parents, family members and presenters to connect, share information and ask questions. We hope to have these forums at regular intervals in the future.

## Tips for navigating the NDIS

Have evidence with you for the reassessment

HomePlace can provide you with evidence of the difference support has made compared to participant's goals

Functional Capacity Assessment by an OT, psychologist - evidence for support required for safety and capacity building are helpful

Let your HomePlace Senior Coordinator know when you know about a Plan reassessment

Let your Senior Coordinator know when you have a new Plan, or a plan 'variation'

If support is cancelled for any reason, e.g. COVID, let's work out together how you can best utilise the \$ to live your best life

Work with an effective support coordinator

Finding the right Home and Living solution takes time - start early

Finding a housemate that is 'right' for you takes time

# Staff Awards

At the Annual General Meeting on 21st October 2022, we would like to recognise six staff who provide great support to and with participants - we need participants, families and staff input to help us do this!



You can nominate 1 or more staff that you think should get an award.  
E-mail us why you think the staff person should get an award.

[homeplacestaffawards@homeplace.com.au](mailto:homeplacestaffawards@homeplace.com.au)  
By 7th October 2022

1



## Respect

Your staff show you respect

2



## Safety

Your staff help you keep safe

3



## Trust

Your staff are honest and reliable

4



## Partnership

Your staff work together with you to achieve your goals

5



## HomePlace Way Award

Your staff puts you and your support first.

Is kind and caring.

Helps you to make your own choices.

Shows HomePlace values when they support you.

Tries to improve support.

Aims to create or strengthen roles to help you contribute to society.

6



## Independence Award

Your staff teaches you ways to do things so you can do them by yourself



# HomePlace has 4 goals

These are the HomePlace Goals:

## Strategic Goal 1 Quality at Core



This means that HomePlace will provide the best care and support for people with disability.

## Strategic Goal 2 Growing the 'HomePlace Community' and supports



This means HomePlace will look for ways we can provide excellent support for more people with disability.

## Strategic Goal 3 Partnerships & Collaborations



This means HomePlace will look for other organisations who think the same way we do. We will work together with them.

## Strategic Goal 4 Thriving over the long term



This means that HomePlace will keep supporting people with disabilities for a long time.

# The Place I Call Home



Respect



Trust



Safety



Partnership



19-21 Belmore Terrace,  
Woodville SA 5011  
9am-5pm Monday - Friday

[www.homeplace.com.au](http://www.homeplace.com.au)  
[admin@homeplace.com.au](mailto:admin@homeplace.com.au)  
8445 9900

Please address all  
correspondence to  
PO Box 16, Ferryden Park  
South Australia 5010

Follow us

