

HOMEPLACE

NEWSLETTER

Spring 2022



Merry Christmas from everyone at HomePlace!

Two celebrations and many achievements in a matter of months – it has been an exciting time at HomePlace. On 21 October 2022, we held our Annual General Meeting on the lawn next to our 'home-base' at Woodville. It was fantastic to come together in person after such a long time with Covid restrictions.

It was a thrill to recognise the achievements of the participants we support - those who have:

- explored new parts of their communities;
- experienced the challenges and excitement of enhancing the places they call home; and
- expanded their lives through work, volunteering, sport, the arts, church and family.

Please go to our website to read more details in our [Annual Report](#).

(continued next page)

More participants received their medals from our HomePlace has got Talent show earlier in the year.

The AGM was also an opportunity to shine a spotlight on a number of HomePlace staff. During the year, the HomePlace Leadership team have received compliments and positive feedback from participants, parents, and colleagues about HomePlace staff and the quality of their work.

The Leadership team wanted to introduce a way of formally recognising staff who have been exceptional in their work. We asked participants, parents and staff to nominate staff for the awards. 45 staff were nominated – almost half of HomePlace's entire workforce.

The first awards recognised staff who in their day-to-day work, demonstrate one of our HomePlace Values of Respect, Safety, Trust and Partnership.

Respect

- Winner: Miriam Johnson
- Runner up: John Jacob

Safety

- Winner: Megan and Mikhaila's team.
- Runner up: Tony Palombi

Trust

- Winner: Mitul Desai
- Runner up: Vik Gupta

Partnership

- Winner: Mario van Antwerpen
- Runner up: Julie Cronin

The HomePlace Independence award

went to a staff member who is a role model for empowering participants to build their skills, grow in independence and confidence in living their life on their terms.

- Winner: Lisa Jenkins
- Runner up: Mark's team

HomePlace Way award

The HomePlace Way award is our top award. It recognised someone who consistently provides support in the HomePlace Way. That is, support which:

- Always places the participant first, that recognises each participant for the unique person they are and what their goals and interests are in living a life that feels right for them
- Is always provided with kindness and compassion

The award went to a staff member who consistently:

- Works in a way that demonstrates our values of Respect, Safety, Trust and Partnership



(HomePlace Way Award continued)

- Strives to do things a little bit better every day, and
- Aims to create or strengthen the roles that people with disability have and contribute to their communities.
- Winner: Chloe Gibbs.
- Runner up: Gisela Sanchez Torres

Quality is at our core at HomePlace – it is our #1 goal. The achievements of every participant we support, and our staff are examples of how we see and know that we are achieving this goal.

On Monday 28 November 2022 we underwent our mid-term NDIS audit. The auditor endorsed that we comply with the NDIS Practice Standards.

They made special mention of our 'participant-first' focus; our continuous improvement approach; and highlighted the positive comments the participants she interviewed made about their HomePlace staff, and the support they receive.

As we head towards the end of 2022, enjoy the festivities and special time with those people who are important in your lives, and have a safe and happy new year.



Julie 😊

Julie Bowman
Chief Executive

HomePlace AGM 2022

We had a great Annual General Meeting celebrating the year gone by with participant talent on display, awards of recognition, farewelling our long standing board member Leslie Wightman and catching up

with friends from the sector. We thank the Hon Emily Bourke MLC, assistant minister for Autism for her attendance and support of HomePlace.





COVID-19 UPDATE

PROTECTING AGAINST & RESPONDING TO COVID-19 AND OTHER ILLNESSES

At HomePlace, our policies are consistent with SA Health recommendations.

Vaccination

- All HomePlace staff and volunteers are fully vaccinated against COVID-19, which includes all boosters as advised by ATAGI.
- We recommend staff and volunteers have their annual flu vaccination.

When a participant who receives SIL supports from HomePlace has symptoms or tests positive to COVID-19:

- Staff will wear face shields, "P2" masks (equivalent to "N95s"), gloves, aprons/gowns, and follow all SA Health PPE donning/doffing recommendations for COVID-19.
- The participant will isolate at home in their bedroom (except for when in need of bathroom) for 7 days.
- They can leave isolation and are not required to wear a mask on day 8 after the onset of their symptoms or positive test result, whichever is the earlier.
- Housemates of participants who test positive are not required to isolate. They will be closely monitored for symptoms and will be asked to have a RAT on day 2, 4 and 6.

When a participant does not have symptoms and tests negative to COVID-19:

- We recommend that staff wear masks – especially whenever 1.5m physical distancing cannot be maintained. Staff can discuss with participants, the participant's preferences for mask-wearing, and staff may consider this when making an informed decision about whether they wear a mask.

Staff who have symptoms of any illness or who test positive to COVID-19

- Will not work.
- They will be able to return to work from day 8 following the onset of COVID-19 symptoms or positive test, whichever is the earlier - and only if all symptoms have stopped.

We highlight that COVID-19 restrictions/protective approaches may change quickly.

Do you have any questions?

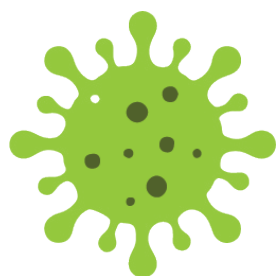
Please ask your Senior support worker/Senior coordinator or phone HomePlace at **84459900**.



COVID-19 UPDATE



If you need help to read this Information, please ask your HomePlace support worker or a member of your family.



COVID-19 is in SA. It can make you sick. If you have any symptoms of:



Cough



Runny/
stuffy nose



Fever



Sore
throat



Diarrhea



Vomiting

Please let your HomePlace team member know straight away. You will need to have a COVID-19 test.



To help keep you and everyone safe, please:

Use hand sanitiser to clean your hands – often!



When you go out wear a mask, especially indoors.

Remind your HomePlace staff to be COVID-19 safe. Please tell them if you want them to wear a mask.



If you want more information, visit the SA Health website page about COVID-19.

<https://www.sahealth.sa.gov.au/wps/wcm/connect/public+content/sa+health+internet/conditions/infectious+diseases/covid-19/covid-19>

Do you have any questions?

Please ask your Senior support worker/Senior coordinator or phone HomePlace at 84459900.

Participant Highlights



Emily has a fun day at the Plaster house

Emily loves getting out and about to discover new activities and crafts. This is Emily's reward after working hard at physiotherapy, plus lunch and nails!

David rocks out at GUNS & ROSES concert

David recently attended the Guns & Roses concert at Adelaide Oval supported by HomePlace – something he has wanted to do for a long time. David has collected CDs & DVDs of the band for many years.





**Mieke celebrates
her 70th birthday!**



**Jack being supported by
Kayla completing a "hand"
for the Christmas Party tree.**

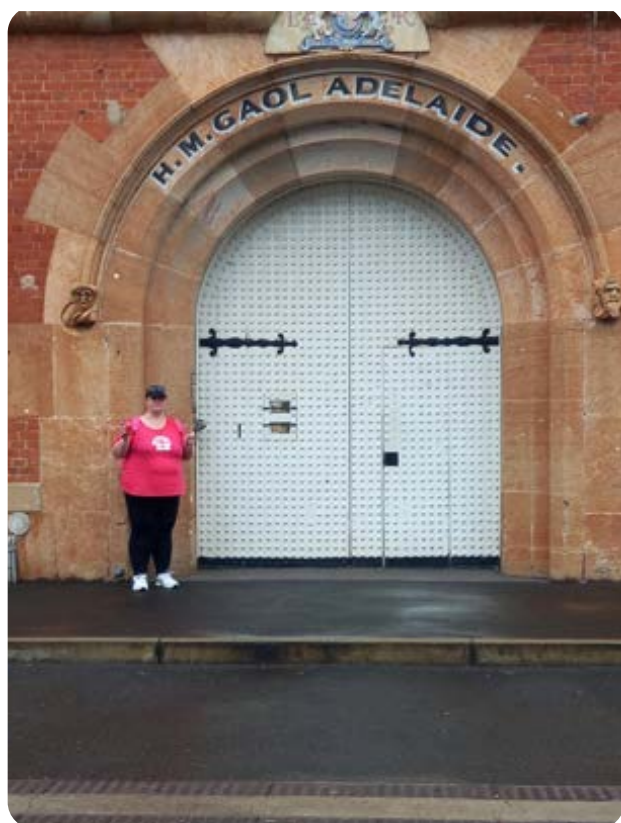


**Megan Brill's
Christmas card**



**Pip making Christmas
Hands with Soni**

Val at the mangrove trail



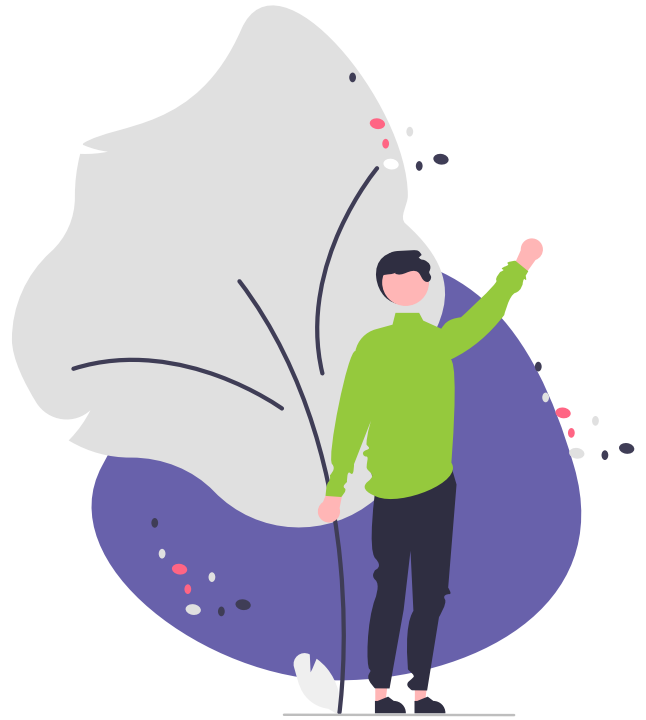
**Tarsh visiting the
H.M. Gaol Adelaide**

**Ralph with Kaitlyn at Club
Cool The Gov**



Welcome to the new HomePlace Staff

Susan Keddeh
Evalin Liyong
Justine (pronounced Justin)
Masiya
Ruth Ngatia
Parag Patel



WE'RE HIRING!

Support Workers and Senior Support Worker

If you are a support worker looking to join a not-for-profit organisation that puts people and quality support before all else, then look no further, apply today on our website.

- Priority on quality of support
- Multiple positions available across a 24/7 roster
- \$34.88 per hour + ongoing training and development opportunities.



www.homeplace.com.au



8445 9900



HomePlace
L I F E S T Y L E S U P P O R T
FOR INDIVIDUALS WITH A DISABILITY

HomePlace has 4 goals

These are the HomePlace Goals:

Strategic Goal 1 Quality at Core

This means that HomePlace will provide the best care and support for people with disability.



Strategic Goal 3 Partnerships & Collaborations

This means HomePlace will look for other organisations who think the same way we do. We will work together with them.



Strategic Goal 2 Growing the 'HomePlace Community' and supports

This means HomePlace will look for ways we can provide excellent support for more people with disability.



Strategic Goal 4 Thriving over the long term

This means that HomePlace will keep supporting people with disabilities for a long time.



The Place I Call Home



Respect



Trust



Safety



Partnership



19-21 Belmore Terrace,
Woodville SA 5011
9am-5pm Monday - Friday

www.homeplace.com.au
admin@homeplace.com.au
8445 9900

Please address all
correspondence to
PO Box 16, Ferryden Park
South Australia 5010

Follow us

