

HomePlace Plan 2026 - 2029



This page is blank on purpose.

Table of contents

About this plan	4
What we want to be	6
Our job	7
Our big plan	8

About this plan

HomePlace wrote this **strategic plan**.



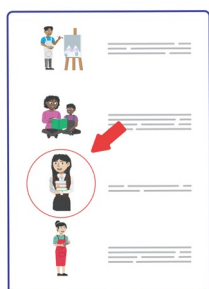
A strategic plan is a big plan for the future.

When you see the word 'we', 'us', or 'our',
it means HomePlace.



The strategic plan tells you what we will do from
2026 to 2029.

In this paper, we call it a 'plan'.



We wrote this plan in an easy to read way.

We use pictures to explain some ideas.



This plan has some hard words.

The first time we write a hard word:

- We will write it in **bold**.
- We will explain what the hard word means.



Ask for help to read this plan if you need it.
A friend, family member, or **support person**
can help you.

A support person is someone who
supports you to do things you find
hard to do by yourself.

What we want to be



We want to be the best at supporting people living with disability.



We will:

- Listen to each person we support.



- Be ready to support each person in the right way when they need it.

Our job

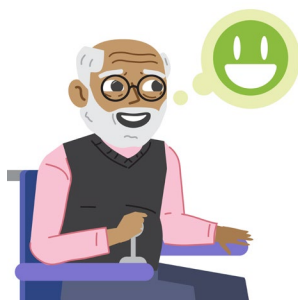


We support people living with disability to live their best life.



We support people living with disability to live a life where they:

- Can make choices.



- Feel good about themselves.



- Do things that matter to them.



- Feel loved and part of the **community**.

A community is a group of people who live, work, or spend time in the same area.

Our big plan



We will keep supporting people living with disability in the best ways.

We will support people living with disability to:



- Learn new things.



- Do the things that matter to them.



- Belong in the community.



We will work with the people we support and:

- Their family.



- Friends.



- Other people who provide support.



We want people living with disability to live a good life everyday.



There are 4 big things that we want to do over the next 4 years.



1. Support people living with disability to learn and belong.



2. Support more people living with disability.



3. Tell more people about us.



4. Stay strong for the future.



We will teach our workers to support people living with disability to:



- Make new friends.



- Learn new things.



We want to support more people living with disability.



We will keep supporting the people we already support in the best ways.



We want to support:

- More young people living with disability.



- More adults living with intellectual disability who want to move into their own home.



We will:

- Provide new supports for young people living with disability that work best for them.



This may be technology to support them to learn new things and make friends.



- We will support adults living with intellectual disability to move out from their parents' home.



We want them to live in a place they feel happy to call their home.



We want more people in Adelaide to know about us.



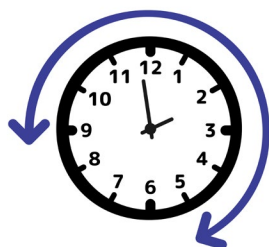
We want to keep supporting people living with disability for a long time.



We want to support more people living with disability in a safe and smart way.



We will not support more than 75 people to make sure we can support them in the best ways.



We will

- Provide more hours of support.



- Save money so we can keep supporting people living with disability in the future.

How to contact us



You can visit our website

www.homeplace.com.au



You can email us at

admin@homeplace.com.au



You can call us on

8445 9900



You can send us a letter to

PO Box 16, Ferryden Park
South Australia 5010



easyread.tech created this Easy Read document using original illustrations. Please do not use these illustrations without permission. Visit easyread.tech for more information.